

TABLE OF CONTENTS

BRASS INSTRUMENTS

YEAR 12 FRENCH HORN.....	1
YEAR 12 TRUMPET.....	4
YEAR 12 TROMBONE.....	6
YEAR 12 EUPHONIUM	8
YEAR 12 TUBA	10
YEAR 12 BRASS BAND INSTRUMENTS	12
• E FLAT SOPRANO CORNET	12
• CORNET	12
• FLUGEL HORN	12
• E FLAT TENOR HORN.....	12
• B FLAT BARITONE / EUPHONIUM	12
• TROMBONE	12
• E FLAT BASS	12
• B FLAT BASS	12

YEAR 12 FRENCH HORN

Technical Requirements

Scales

A major, one octave

A flat, D and F major, two octaves

B harmonic and melodic minor, one octave

F, F sharp and D harmonic and melodic minor, two octaves

Articulation

Slurred. Crotchet = 92



Tongued. Crotchet = 92



Two tongued and two slurred. Crotchet = 92



Arpeggios of the above scales. Compass as above

Articulation

Slurred. Dotted crotchet = 92



Tongued. Dotted crotchet = 92



Chromatic scales on A flat and D, two octaves

Articulation

Slurred in threes. Crotchet = 92



Slurred in fours. Crotchet = 72



Tongued in threes. Crotchet = 92



Tongued in fours. Crotchet = 72



Dominant 7ths on C and F, two octaves

Articulation

Slurred and tongued

Crotchet = 92



Hand stopped notes



o = open sound

+ = hand stopped

Prepared Works

Full Elective

- Each student is required to prepare for performance five pieces which:
 - are varied in technical requirements
 - are selected from at least three major eras of composition (e.g. Baroque; Classical, Romantic, 20th Century)
 - are varied with regard to structure and style (i.e. not all studies, or all preludes or all sonatas).
- Of the five pieces selected, up to two may be ensembles that have only one performer per part.

Half Elective

- Each student is required to prepare for performance two pieces which:
 - are varied in technical requirements
 - are selected from different eras of composition (e.g. Baroque; Classical, Romantic, 20th Century)
 - are varied with regard to structure and style (i.e. not both studies, or both fugues, or both sonatas).
- Of the two pieces selected, one may be an ensemble that has only one performer per part.

General Instructions

1. All technical work is required for the examination and is to be performed from memory.
All technical work is to be played ascending and descending within the required range.
Students should be encouraged to develop skills in a wide range of technical work.
2. Students should be encouraged to develop facility in sight reading.
3. The pieces listed in the section Typical Pieces are only an indication of the level of performance required.
4. For pieces where publishers are not stipulated, it is recommended that performers use scores that are as near to the original as is possible.

Sight Reading

As outlined in the Syllabus Manual Year 11 and 12 Volume 5, The Arts.

YEAR 12 TRUMPET

Technical Requirements

Scales

E flat major, one octave

F sharp, B flat and A major, two octaves

D harmonic and melodic minor, one octave

F sharp, A and G sharp (A flat) harmonic and melodic minor, two octaves

Articulation

Slurred. Crotchet = 92



Tongued. Crotchet = 92



Two tongued and two slurred. Crotchet = 92



Arpeggios of the above scales. Compass as above

Articulation

Slurred. Dotted crotchet = 92



Tongued. Dotted crotchet = 92



Chromatic scales on A and B flat, two octaves

Articulation

Slurred in threes. Crotchet = 92.



Slurred in fours. Crotchet = 72.



Tongued in threes. Crotchet = 92



Tongued in fours. Crotchet = 72



Dominant 7ths on A and B flat, two octaves

Articulation

Slurred and tongued

Crotchet = 92



Prepared Works

Full Elective

1. Each student is required to prepare for performance five pieces which:
 - (a) are varied in technical requirements
 - (b) are selected from at least three major eras of composition (e.g. Baroque; Classical, Romantic, 20th Century)
 - (c) are varied with regard to structure and style (i.e. not all studies, or all preludes or all sonatas).
2. Of the five pieces selected, up to two may be ensembles that have only one performer per part.

Half Elective

1. Each student is required to prepare for performance two pieces which:
 - (a) are varied in technical requirements
 - (b) are selected from different eras of composition (e.g. Baroque; Classical, Romantic, 20th Century)
 - (d) are varied with regard to structure and style (i.e. not both studies, or both fugues, or both sonatas).
2. Of the two pieces selected, one may be an ensemble that has only one performer per part.

General Instructions

1. All technical work is required for the examination and is to be performed from memory.
All technical work is to be played ascending and descending within the required range.
Students should be encouraged to develop skills in a wide range of technical work.
2. Students should be encouraged to develop facility in sight reading.
3. The pieces listed in the section Typical Pieces are only an indication of the level of performance required.
4. For pieces where publishers are not stipulated, it is recommended that performers use scores that are as near to the original as is possible.

Sight Reading

As outlined in the Syllabus Manual Year 11 and 12 Volume 5, The Arts.

YEAR 12 TROMBONE

Technical Requirements

Scales

D flat major, one octave

E, G and A flat major, two octaves

C harmonic and melodic minor, one octave

E, G and F sharp (G flat) harmonic and melodic minor, two octaves

Articulation

Slurred. Crotchet = 92



Tongued. Crotchet = 92



Two tongued and two slurred. Crotchet = 92



Arpeggios of the above scales. Compass as above

Articulation

Slurred. Dotted crotchet = 92



Tongued. Dotted crotchet = 92



Chromatic scales on G and A flat, two octaves

Articulation

Slurred in threes. Crotchet = 92



Slurred in fours. Crotchet = 72



Tongued in threes. Crotchet = 92



Tongued in fours. Crotchet = 72



Dominant 7ths on G and A flat, two octaves

Articulation

Slurred and tongued

Crotchet = 92



Prepared Works

Full Elective

1. Each student is required to prepare for performance five pieces which:
 - (a) are varied in technical requirements
 - (b) are selected from at least three major eras of composition (e.g. Baroque; Classical, Romantic, 20th Century)
 - (c) are varied with regard to structure and style (i.e. not all studies, or all preludes or all sonatas).
2. Of the five pieces selected, up to two may be ensembles that have only one performer per part.

Half Elective

1. Each student is required to prepare for performance two pieces which:
 - (a) are varied in technical requirements
 - (b) are selected from different eras of composition (e.g. Baroque; Classical, Romantic, 20th Century)
 - (c) are varied with regard to structure and style (i.e. not both studies, or both fugues, or both sonatas).
2. Of the two pieces selected, one may be an ensemble that has only one performer per part.

General Instructions

1. All technical work is required for the examination and is to be performed from memory.
All technical work is to be played ascending and descending within the required range.
Students should be encouraged to develop skills in a wide range of technical work.
2. Students should be encouraged to develop facility in sight reading.
3. The pieces listed in the section Typical Pieces are only an indication of the level of performance required.
4. For pieces where publishers are not stipulated, it is recommended that performers use scores that are as near to the original as is possible.

Sight Reading

As outlined in the Syllabus Manual Year 11 and 12 Volume 5, The Arts.

YEAR 12 EUPHONIUM

Technical Requirements

Scales

D flat major, one octave

E, G and A flat major, two octaves

C harmonic and melodic minor, one octave

E, G and F sharp (G flat) harmonic and melodic minor, two octaves

Articulation

Slurred. Crotchet = 92



Slurred in fours. Crotchet = 72.



Tongued in threes. Crotchet = 92



Tongued in fours. Crotchet = 72



Dominant 7ths on G and A flat, two octaves

Articulation

Slurred and tongued

Crotchet = 92



Prepared Works

Full Elective

1. Each student is required to prepare for performance five pieces which:
 - (a) are varied in technical requirements
 - (b) are selected from at least three major eras of composition (e.g. Baroque; Classical, Romantic, 20th Century)
 - (c) are varied with regard to structure and style (i.e. not all studies, or all preludes or all sonatas).
2. Of the five pieces selected, up to two may be ensembles that have only one performer per part.

Half Elective

1. Each student is required to prepare for performance two pieces which:
 - (a) are varied in technical requirements
 - (b) are selected from different eras of composition (e.g. Baroque; Classical, Romantic, 20th Century)
 - (f) are varied with regard to structure and style (i.e. not both studies, or both fugues, or both sonatas).
2. Of the two pieces selected, one may be an ensemble that has only one performer per part.

General Instructions

1. All technical work is required for the examination and is to be performed from memory.
All technical work is to be played ascending and descending within the required range.
Students should be encouraged to develop skills in a wide range of technical work.
2. Students should be encouraged to develop facility in sight reading.
3. The pieces listed in the section Typical Pieces are only an indication of the level of performance required.
4. For pieces where publishers are not stipulated, it is recommended that performers use scores that are as near to the original as is possible.

Sight Reading

As outlined in the Syllabus Manual Year 11 and 12 Volume 5, The Arts.

YEAR 12 TUBA

Technical Requirements

Scales

G flat major, one octave

A, D flat and C major, two octaves

F harmonic and melodic minor, one octave

A, C and B harmonic and melodic minor, two octaves

Articulation

Slurred. Crotchet = 92





Tongued in fours. Crotchet = 72

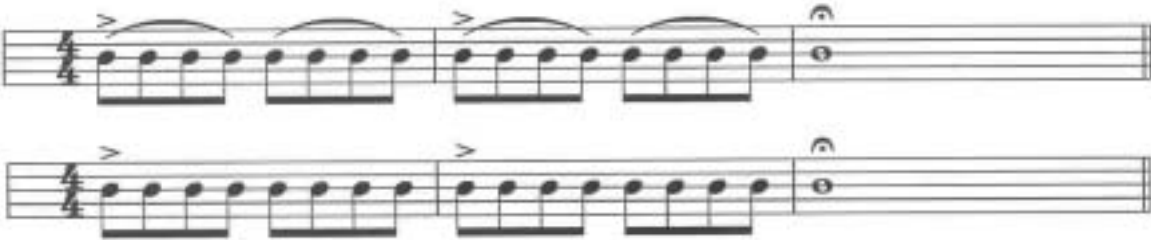


Dominant 7ths on C and D flat, two octaves

Articulation

Slurred and tongued

Crotchet = 92



Prepared Works

Full Elective

1. Each student is required to prepare for performance five pieces which:
 - (a) are varied in technical requirements
 - (b) are selected from at least three major eras of composition (e.g. Baroque; Classical, Romantic, 20th Century)
 - (c) are varied with regard to structure and style (i.e. not all studies, or all preludes or all sonatas).
2. Of the five pieces selected, up to two may be ensembles that have only one performer per part.

Half Elective

1. Each student is required to prepare for performance two pieces which:
 - (a) are varied in technical requirements
 - (b) are selected from different eras of composition (e.g. Baroque; Classical, Romantic, 20th Century)
 - (g) are varied with regard to structure and style (i.e. not both studies, or both fugues, or both sonatas).
2. Of the two pieces selected, one may be an ensemble that has only one performer per part.

General Instructions

1. All technical work is required for the examination and is to be performed from memory.
All technical work is to be played ascending and descending within the required range.
Students should be encouraged to develop skills in a wide range of technical work.
2. Students should be encouraged to develop facility in sight reading.
3. The pieces listed in the section Typical Pieces are only an indication of the level of performance required.
4. For pieces where publishers are not stipulated, it is recommended that performers use scores that are as near to the original as is possible.

Sight Reading

As outlined in the Syllabus Manual Year 11 and 12 Volume 5, The Arts.

YEAR 12 BRASS BAND INSTRUMENTS

The following brass band instruments are in treble clef and the requirements for each are outlined below.

- **E FLAT SOPRANO CORNET**
- **CORNET**
- **FLUGEL HORN**
- **E FLAT TENOR HORN**
- **B FLAT BARITONE / EUPHONIUM**
- **TROMBONE**
- **E FLAT BASS**
- **B FLAT BASS**

Technical Requirements

All technical requirements including major, harmonic and melodic minor scales, arpeggios, chromatic scales and dominant 7ths as for concert trumpet.

All articulation patterns and tempi as for concert trumpet.

Prepared Works

Full Elective

1. Each student is required to prepare for performance five pieces which:
 - (a) are varied in technical requirements
 - (b) are selected from at least three major eras of composition (e.g. Baroque; Classical, Romantic, 20th Century)
 - (c) are varied with regard to structure and style (i.e. not all studies, or all preludes or all sonatas).
2. Of the five pieces selected, up to two may be ensembles that have only one performer per part.

Half Elective

1. Each student is required to prepare for performance two pieces which:
 - (a) are varied in technical requirements
 - (b) are selected from different eras of composition (e.g. Baroque; Classical, Romantic, 20th Century)
 - (h) are varied with regard to structure and style (i.e. not both studies, or both fugues, or both sonatas).
2. Of the two pieces selected, one may be an ensemble that has only one performer per part.

General Instructions

1. All technical work is required for the examination and is to be performed from memory.
All technical work is to be played ascending and descending within the required range.
Students should be encouraged to develop skills in a wide range of technical work.
2. Students should be encouraged to develop facility in sight reading.
3. The pieces listed in the section Typical Pieces are only an indication of the level of performance required.
4. For pieces where publishers are not stipulated, it is recommended that performers use scores that are as near to the original as is possible.

Sight Reading

As outlined in the Syllabus Manual Year 11 and 12 Volume 5, The Arts.