

TABLE OF CONTENTS
STRING INSTRUMENTS

YEAR 12 VIOLIN..... 1
YEAR 12 VIOLA 3
YEAR 12 VIOLONCELLO 5
YEAR 12 DOUBLE BASS..... 7
YEAR 12 HARP 9
YEAR 12 CLASSICAL GUITAR..... 11

YEAR 12 VIOLIN

Technical Requirements

Scales

D and E major, two octaves
B flat and A flat major, three octaves

C sharp harmonic and melodic minor, one octave
F harmonic and melodic minor, two octaves
G and B harmonic and melodic minor, three octaves

Bowing: Separate bows, legato



Slurred, one octave per bow

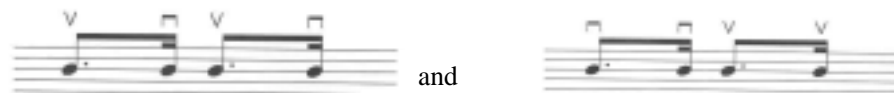


Hook stroke, playing notes twice

at the nut;



at the point;



Spiccato, even quavers, single notes

Crotchet = 100

Arpeggios of the above scales. Compass as above

Bowing: Separate bows, legato



Slurred, 3 notes per bow



Crotchet = 60

Chromatic scales on G and B flat, two octaves

Bowing: Slurred, 12 notes per bow, even semiquavers

Crotchet = 80

Dominant 7ths on C and E flat, two octaves

Bowing: Separate bows, legato, even quavers, single notes
Slurred, 4 notes per bow, even quavers

Crotchet = 60

Prepared Works

Full Elective

1. Each student is required to prepare for performance five pieces which:
 - (a) are varied in technical requirements
 - (b) are selected from at least three major eras of composition (e.g. Baroque; Classical, Romantic, 20th Century)
 - (c) are varied with regard to structure and style (i.e. not all studies, or all preludes or all sonatas).
2. Of the five pieces selected, up to two may be ensembles with only one performer per part.

Half Elective

1. Each student is required to prepare for performance two pieces which:
 - (a) are varied in technical requirements
 - (b) are selected from different eras of composition (e.g. Baroque; Classical, Romantic, 20th Century)
 - (c) are varied with regard to structure and style (i.e. not both studies, or both fugues, or both sonatas).
2. Of the two pieces selected, one may be an ensemble that has only one performer per part.

General Instructions

1. All technical work is required for the examination and is to be performed from memory.
All technical work is to be played ascending and descending within the required range.
Students should be encouraged to develop skills in a wide range of technical work.
2. Students should be encouraged to develop facility in sight reading.
3. The pieces listed in the section Typical Pieces are only an indication of the level of performance required.
4. For pieces where publishers are not stipulated, it is recommended that performers use scores that are as near to the original as is possible.

Sight Reading

As outlined in the Syllabus Manual Year 11 and 12 Volume 5, The Arts.

YEAR 12 VIOLA

Technical Requirements

Scales

F and A flat major, two octaves
C and E flat major, three octaves

F and A harmonic and melodic minor, two octaves
C and D harmonic and melodic minor, three octaves

Bowing: Separate bows, legato



Slurred, one octave per bow



Hook stroke, playing notes twice

at the nut;



at the point;



and



Spiccato, even quavers, single notes

Crotchet = 100

Arpeggios of the above scales. Compass as above

Bowing: Separate bows, legato



Slurred, 3 notes per bow



Crotchet = 60

Chromatic scales on C and E flat, two octaves

Bowing: Slurred, 12 notes per bow, even semiquavers

Crotchet = 80

Dominant 7ths on F and A, two octaves

Bowing: Single bows, legato, even quavers, single notes
Slurred, 4 notes per bow, even quavers

Crotchet = 60

Prepared Works

Full Elective

1. Each student is required to prepare for performance five pieces which:
 - (a) are varied in technical requirements
 - (b) are selected from at least three major eras of composition (e.g. Baroque; Classical, Romantic, 20th Century)
 - (c) are varied with regard to structure and style (i.e. not all studies, or all preludes or all sonatas).
2. Of the five pieces selected, up to two may be ensembles with only one performer per part.

Half Elective

1. Each student is required to prepare for performance two pieces which:
 - (a) are varied in technical requirements
 - (b) are selected from different eras of composition (e.g. Baroque; Classical, Romantic, 20th Century)
 - (d) are varied with regard to structure and style (i.e. not both studies, or both fugues, or both sonatas).
2. Of the two pieces selected, one may be an ensemble that has only one performer per part.

General Instructions

1. All technical work is required for the examination and is to be performed from memory.
All technical work is to be played ascending and descending within the required range.
Students should be encouraged to develop skills in a wide range of technical work.
2. Students should be encouraged to develop facility in sight reading.
3. The pieces listed in the section Typical Pieces are only an indication of the level of performance required.
4. For pieces where publishers are not stipulated, it is recommended that performers use scores that are as near to the original as is possible.

Sight Reading

As outlined in the Syllabus Manual Year 11 and 12 Volume 5, The Arts.

YEAR 12 VIOLONCELLO

Technical Requirements

Scales

F and A flat major, two octaves

C and E flat major, three octaves

F and A harmonic and melodic minor, two octaves

C and D harmonic and melodic minor, three octaves

Bowing: Separate bows, legato



Slurred, one octave per bow



Hook stroke, playing notes twice

in the lower half of the bow,



at the point;



Spiccato, even quavers, single notes

Crotchet = 100

Arpeggios of the above scales. Compass as above

Bowing: Separate bows, legato



Slurred, 3 notes per bow



Crotchet = 60

Chromatic scales on C and D, two octaves

Bowing: Slurred, 6 notes per bow, even semiquavers

Crotchet = 80

Dominant 7ths on F and D, two octaves

Bowing: Separate bows, legato, even quavers, single notes
Slurred, 4 notes per bow, even quavers

Crotchet = 60

Prepared Works

Full Elective

1. Each student is required to prepare for performance five pieces which:
 - (a) are varied in technical requirements
 - (b) are selected from at least three major eras of composition (e.g. Baroque; Classical, Romantic, 20th Century)
 - (c) are varied with regard to structure and style (i.e. not all studies, or all preludes or all sonatas).
2. Of the five pieces selected, up to two may be ensembles with only one performer per part.

Half Elective

1. Each student is required to prepare for performance two pieces which:
 - (a) are varied in technical requirements
 - (b) are selected from different eras of composition (e.g. Baroque; Classical, Romantic, 20th Century)
 - (c) are varied with regard to structure and style (i.e. not both studies, or both fugues, or both sonatas).
2. Of the two pieces selected, one may be an ensemble that has only one performer per part.

General Instructions

1. All technical work is required for the examination and is to be performed from memory.
All technical work is to be played ascending and descending within the required range.
Students should be encouraged to develop skills in a wide range of technical work.
2. Students should be encouraged to develop facility in sight reading.
3. The pieces listed in the section Typical Pieces are only an indication of the level of performance required.
4. For pieces where publishers are not stipulated, it is recommended that performers use scores that are as near to the original as is possible.

Sight Reading

As outlined in the Syllabus Manual Year 11 and 12 Volume 5, The Arts.

YEAR 12 DOUBLE BASS

Technical Requirements

Scales

D major, one octave

F, A flat and A major, two octaves

D and B harmonic and melodic minor, one octave

F and F sharp harmonic and melodic minor, two octaves

Bowing: Separate bows, legato



Slurred, one octave per bow



Hook stroke, playing notes twice



Spiccato, even quavers, playing each note twice

Crotchet = 100

Arpeggios of the above scales. Compass as above

Bowing: Separate bows, legato



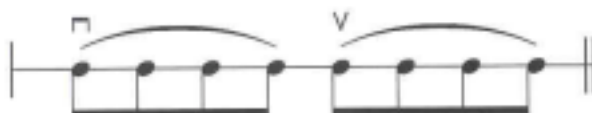
Slurred, 3 notes per bow



Crotchet = 60

Chromatic scales on F and A flat, two octaves

Bowing: Slurred in 4s



Crotchet = 60

Dominant 7ths on A and F, two octaves

Bowing: Separate bows, legato, even quavers, single notes
Slurred, 4 notes per bow, even quavers

Crotchet = 60

Prepared Works

Full Elective

1. Each student is required to prepare for performance five pieces which:
 - (a) are varied in technical requirements
 - (b) are selected from at least three major eras of composition (e.g. Baroque; Classical, Romantic, 20th Century)
 - (c) are varied with regard to structure and style (i.e. not all studies, or all preludes or all sonatas).
2. Of the five pieces selected, up to two may be ensembles with only one performer per part.

Half Elective

1. Each student is required to prepare for performance two pieces which:
 - (a) are varied in technical requirements
 - (b) are selected from different eras of composition (e.g. Baroque; Classical, Romantic, 20th Century)
 - (f) are varied with regard to structure and style (i.e. not both studies, or both fugues, or both sonatas).
2. Of the two pieces selected, one may be an ensemble that has only one performer per part.

General Instructions

1. All technical work is required for the examination and is to be performed from memory.
All technical work is to be played ascending and descending within the required range.
Students should be encouraged to develop skills in a wide range of technical work.
2. Students should be encouraged to develop facility in sight reading.
3. The pieces listed in the section Typical Pieces are only an indication of the level of performance required.
4. For pieces where publishers are not stipulated, it is recommended that performers use scores that are as near to the original as is possible.

Sight Reading

As outlined in the Syllabus Manual Year 11 and 12 Volume 5, The Arts.

YEAR 12 HARP

Technical Requirements

Scales

G, B flat, A and E flat major, hands together, four octaves

E, G, F sharp and C harmonic and melodic minor, hands together, four octaves

Crotchet = 72, semiquavers

Fingering as below:



Arpeggios of the above scales, root position, hands together, one octave apart

Crotchet = 66. in triplets



Crotchet = 80. in fours



Dominant 7ths of B flat and G, hands together, three octaves

Crotchet = 50, semiquavers

Prepared Works

Full Elective

1. Each student is required to prepare for performance five pieces which:
 - (a) are varied in technical requirements
 - (b) are selected from at least three major eras of composition (e.g. Baroque; Classical, Romantic, 20th Century)
 - (c) are varied with regard to structure and style (i.e. not all studies, or all preludes or all sonatas).
2. Of the five pieces selected, up to two may be ensembles with only one performer per part.

Half Elective

1. Each student is required to prepare for performance two pieces which:
 - (a) are varied in technical requirements
 - (b) are selected from different eras of composition (e.g. Baroque; Classical, Romantic, 20th Century)
 - (g) are varied with regard to structure and style (i.e. not both studies, or both fugues, or both sonatas).
2. Of the two pieces selected, one may be an ensemble that has only one performer per part.

General Instructions

1. All technical work is required for the examination and is to be performed from memory.
All technical work is to be played ascending and descending within the required range.
Students should be encouraged to develop skills in a wide range of technical work.
2. Students should be encouraged to develop facility in sight reading.
3. The pieces listed in the section Typical Pieces are only an indication of the level of performance required.
4. For pieces where publishers are not stipulated, it is recommended that performers use scores that are as near to the original as is possible.

Sight Reading

As outlined in the Syllabus Manual Year 11 and 12 Volume 5, The Arts.

YEAR 12 CLASSICAL GUITAR

Technical Requirements

Scales

G, A, B flat and A flat major, three octaves

E, F sharp, G and F harmonic and melodic minor, three octaves

im, mi, ia, ai, ma, am using the rhythm shown



Crotchet = 120, quavers

Arpeggios of the above scales. Compass as above. To be played as crotchets

Chromatic scales on B flat, two octaves and G, three octaves

Dominant 7ths of G and A flat, two octaves

Crotchet = 120

Prepared Works

Full Elective

1. Each student is required to prepare for performance five pieces which:
 - (a) are varied in technical requirements
 - (b) are selected from at least three major eras of composition (e.g. Baroque; Classical, Romantic, 20th Century)
 - (c) are varied with regard to structure and style (i.e. not all studies, or all preludes or all sonatas).
2. Of the five pieces selected, up to two may be ensembles with only one performer per part.

Half Elective

1. Each student is required to prepare for performance two pieces which:
 - (a) are varied in technical requirements
 - (b) are selected from different eras of composition (e.g. Baroque; Classical, Romantic, 20th Century)
 - (h) are varied with regard to structure and style (i.e. not both studies, or both fugues, or both sonatas).
2. Of the two pieces selected, one may be an ensemble that has only one performer per part.

General Instructions

1. All technical work is required for the examination and is to be performed from memory.
All technical work is to be played ascending and descending within the required range.
Students should be encouraged to develop skills in a wide range of technical work.
2. Students should be encouraged to develop facility in sight reading.
3. The pieces listed in the section Typical Pieces are only an indication of the level of performance required.
4. For pieces where publishers are not stipulated, it is recommended that performers use scores that are as near to the original as is possible.

Sight Reading

As outlined in the Syllabus Manual Year 11 and 12 Volume 5, The Arts.